

## Solution Overview

# ACS™ Growth Accelerator

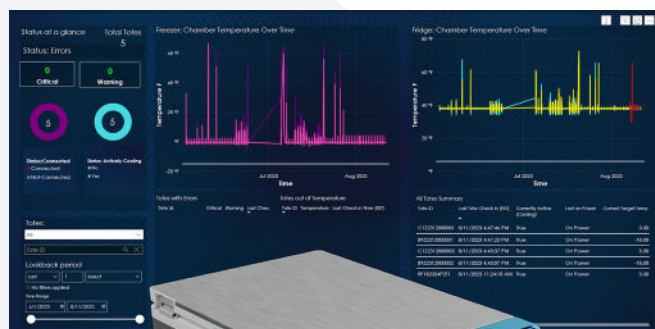
**Real-time monitoring enables real-time action, impact and continuous improvement.**

Phononic's Growth Accelerator, part of the ACS™ Ecosystem, provides real-time monitoring of tote operating conditions and utilization that empower team members to take clear and necessary action, while reassuring end customers of their food safety and integrity.

Real-time temperature monitoring ensures food safety and quality and complete cold chain documentation.

Continuous operating condition read-out enables continuous improvement and system performance optimization to minimize energy usage and maximize ROI.

Effortlessly monitor energy consumption and greenhouse gas reduction data to document energy consumption reduction and sustainability metrics.



## Benefits

- Ensure temperature compliance during the entire online grocery fulfillment process.
- Optimize energy usage and capacity.
- Increase uptime of cold chain operations.
- Seamless integration with other management systems.
- Totes connect as they move from one dedicated WiFi network to another – no need to reconnect.

## Features

- Real-time monitoring of tote internal temperature and other operational data.
- Regular reporting increments with downloadable history.
- REST API using webhooks available for integration into customer management system.
- Customizable tote identification.
- Customizable web-based dashboard.

## Applications

- Chilled and frozen storage in automated or manual fulfillment centers.
- Grocery retail brick and mortar locations online grocery fulfillment.
- Transport and delivery of grocery and other refrigerated and/or frozen products.