

Data Sheet

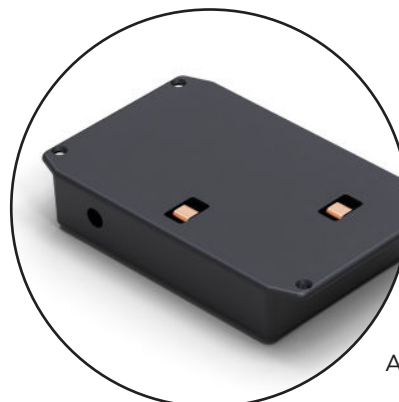
ACS™ Cart Kit

The ACS™ Cart Kit is designed to be integrated into customer-owned picking carts. Included in the ACS™ Cart Kit are the power components necessary to deliver power to Phononic's ACS™ Refrigerator or Freezer totes. Additional installation instructions are available and provide the necessary details cart manufacturers require for their manufacturing and assembly processes.

Included components

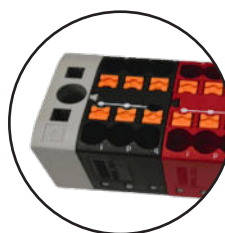
- ACS™ Tote Dock [x3]
- Power Terminal Block
- Resettable Circuit Breakers [x3]
- Green Power-on LED Light
- Dock Wiring w/ Connector [x3]
- Installation Guide

Power components:



ACS™ Tote Dock

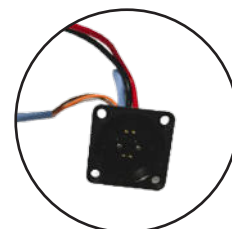
Terminal block



Breakers



Cable harness



Power connector



* For illustration purposes only, cart configuration may vary.

Technical Specifications

Max Number of Powered Positions per Kit	3
Min. Per Tote Position Weight Capacity	75 lbs

Minimum space requirements per tote position

Tote Maximum Footprint [L]	598 mm (see figure A)
Tote Maximum Footprint [W]	398 mm (see figure B)
Tote Maximum Footprint [H - lid open 90°]	687 mm (see figure C)

Figure A:
Tote Maximum Footprint [L]

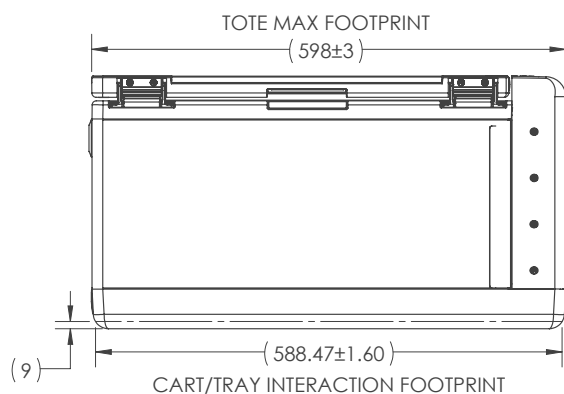


Figure B:
Tote Maximum Footprint [W]

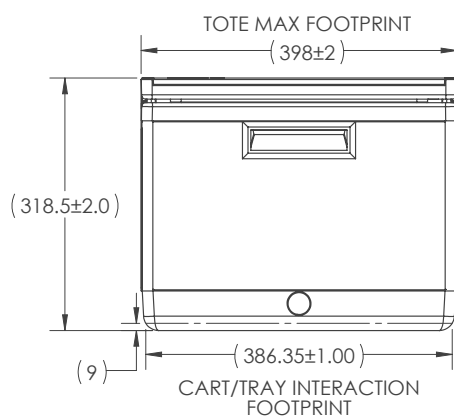


Figure C:
Tote Maximum Footprint [H]

